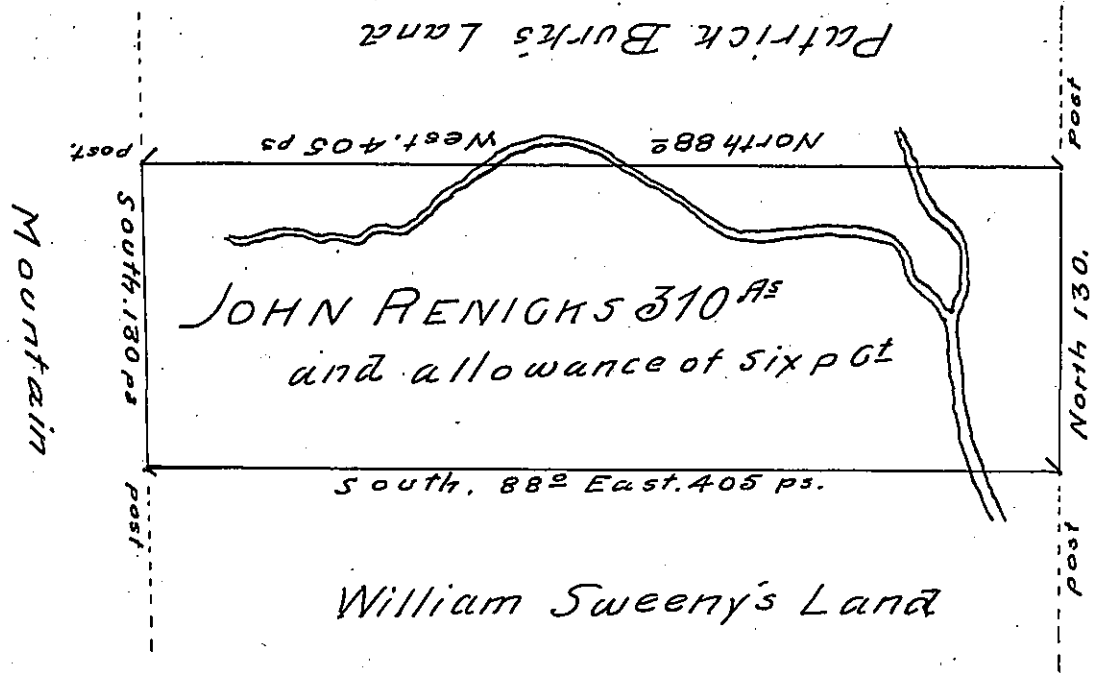


© 130. 130



A Draught of a Tract of Land situate on Jennings's Run in the County of Cumberland containing Three hundred and ten acres and the usual allowance of six acres p Ct for roads &c. Surveyed the 10th day of October 1767 for John Renicks in pursuance of an order No 4320 dated the 2^d day of August 1767

R. Richard Tea

Dep^y Survey^r

To John Lukens Esq^r

Surveyor General

IN TESTIMONY that the above is a copy of the original remaining on file in the Department of Internal Affairs of Pennsylvania, made conformably to an Act of Assembly approved the 16th day of February, 1833, I have hereunto set my Hand and caused the Seal of said Department to be affixed at Harrisburg, this twenty-third day of November 1905

Leach P Brown
Secretary of Internal Affairs.